



**U.S. Department of State
Bureau of Population, Refugees, and Migration**

The U.S. Refugee Admissions Program

**Barbara Day
Office of Refugee Admissions
Bureau of Population, Refugees, and Migration
U.S. Department of State
August 2017**



U.S. Department of State Bureau of Population, Refugees, and Migration

The U.S. Refugee Admissions Program

- Offers resettlement in the United States to persons overseas who have been persecuted or have a well-founded fear of persecution based on one of the five statutory grounds: **race, religion, nationality, political opinion, membership in particular social group.**
- Focuses on refugees with protection vulnerabilities while in refugee hosting countries.
- The goal of the program is economic self-sufficiency through employment as soon as possible.



How is the Refugee Admissions Ceiling Set?

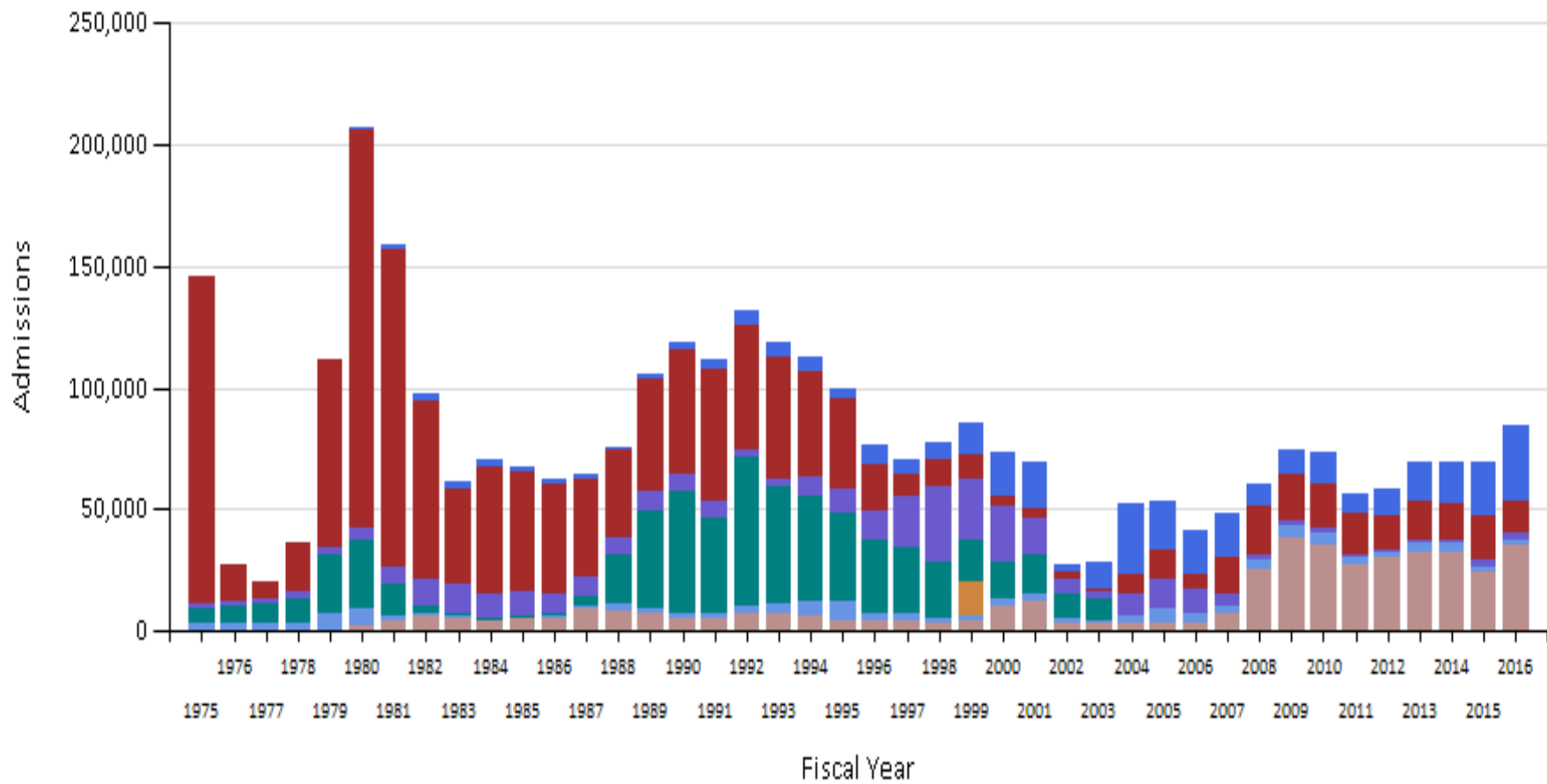
- Ongoing analysis and consultations with UNHCR, NGOs, U.S. communities, and Congress throughout the year inform our planning.
- Each summer, PRM prepares the Report to Congress laying out proposed regional ceilings for refugee admissions, which must be cleared by DHS, HHS, National Security Staff, OMB.
- Secretary of State presents the President's proposal to Judiciary Committees in House and Senate. ("Consultations").
- Presidential Determination issued before refugees may arrive in next fiscal year.



U.S. Department of State Bureau of Population, Refugees, and Migration

U.S. REFUGEE ADMISSIONS - FY 2017

Region	Ceiling	Arrivals as of 7/24	Primary populations
Africa	35,000	19,216	Congolese in TZ, UG, BU, RW; Somalis in KE and ET; Eritreans in ET and KE. 28 nationalities total.
East Asia	12,000	4,830	Burmese in Thailand and Malaysia
Europe/ Central Asia	4,000	4,545	Religious minorities from the former Soviet Union
Latin America	5,000	1,536	Minors from El Salvador, Guatemala and Honduras, Colombians, Cubans
N. East/S. Asia	40,000	20,207	Iraqis, Syrians, Bhutanese in Nepal (declining #s); Iranian religious minorities, some Afghans
Unallocated Reserve	14,000	0	Available for use as needed for any region
Total	110,000	50,334	



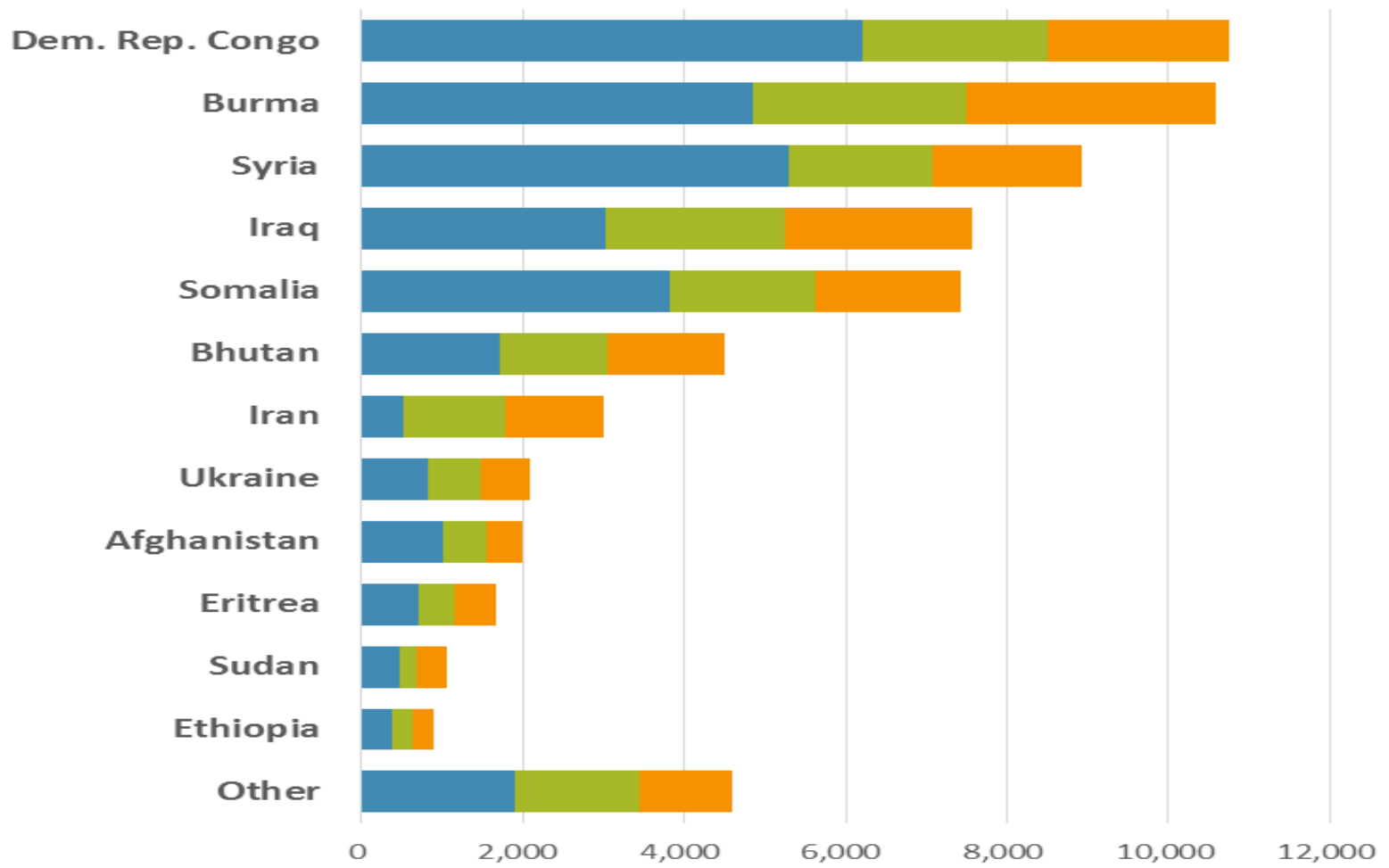
Regions (Based on the Nationality of the Principal Applicant)

- Africa
- Asia
- Europe
- Former Soviet Union
- Kosovo
- Latin America / Caribbean
- Near East / South Asia



Refugees Admitted to the U.S. in Fiscal Year 2016

Children Women Men





U.S. Department of State Bureau of Population, Refugees, and Migration

Partners

International

- UNHCR
- International Organization for Migration (IOM)
- Department of Homeland Security (DHS)
- Resettlement Support Centers (RSC)

Domestic

- Department of Health and Human Services/Office of Refugee Resettlement (ORR)
- Resettlement agencies
- State and local governments
- Social service organizations
- Volunteers, including former refugees



U.S. Department of State Bureau of Population, Refugees, and Migration

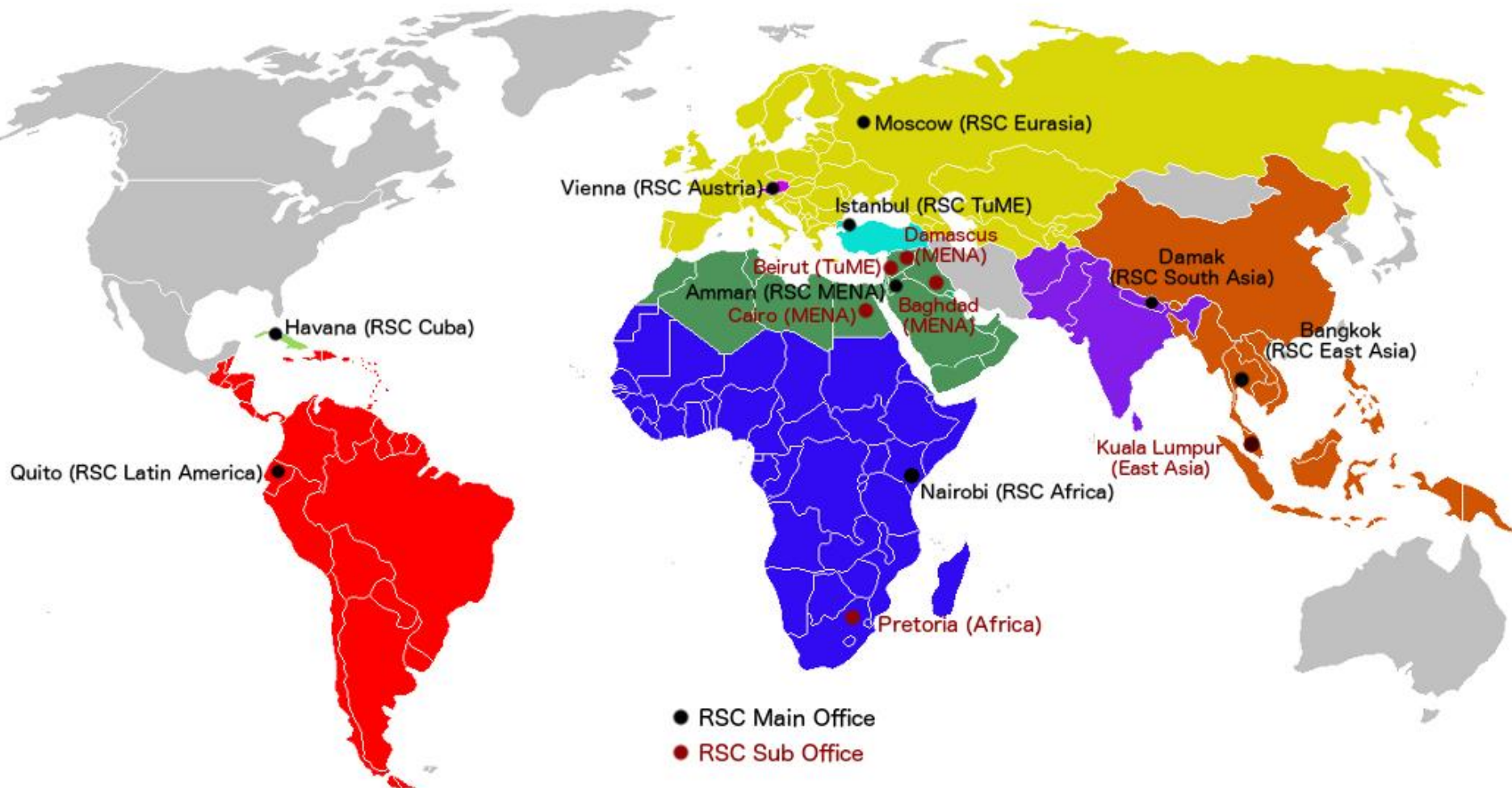
How is a refugee admitted to the U.S.?

- **Access** to the program is granted by the Department of State upon receipt of a referral from UNHCR, a U.S. Embassy, or certain qualified and trained non-governmental organizations. In special circumstances individuals may self-apply.
- Case is **prepared** by a State Department-funded Resettlement Support Center. Security checks are launched.
- Case is **adjudicated** by Department of Homeland Security officer in a face-to-face interview. Fingerprints are taken.
- If case is **approved**, RSC coordinates medical exam, provides cultural orientation, requests assurance from resettlement agency, and works with IOM to book travel to the United States.



U.S. Department of State Bureau of Population, Refugees, and Migration

RSC Coverage Map





U.S. Department of State Bureau of Population, Refugees, and Migration

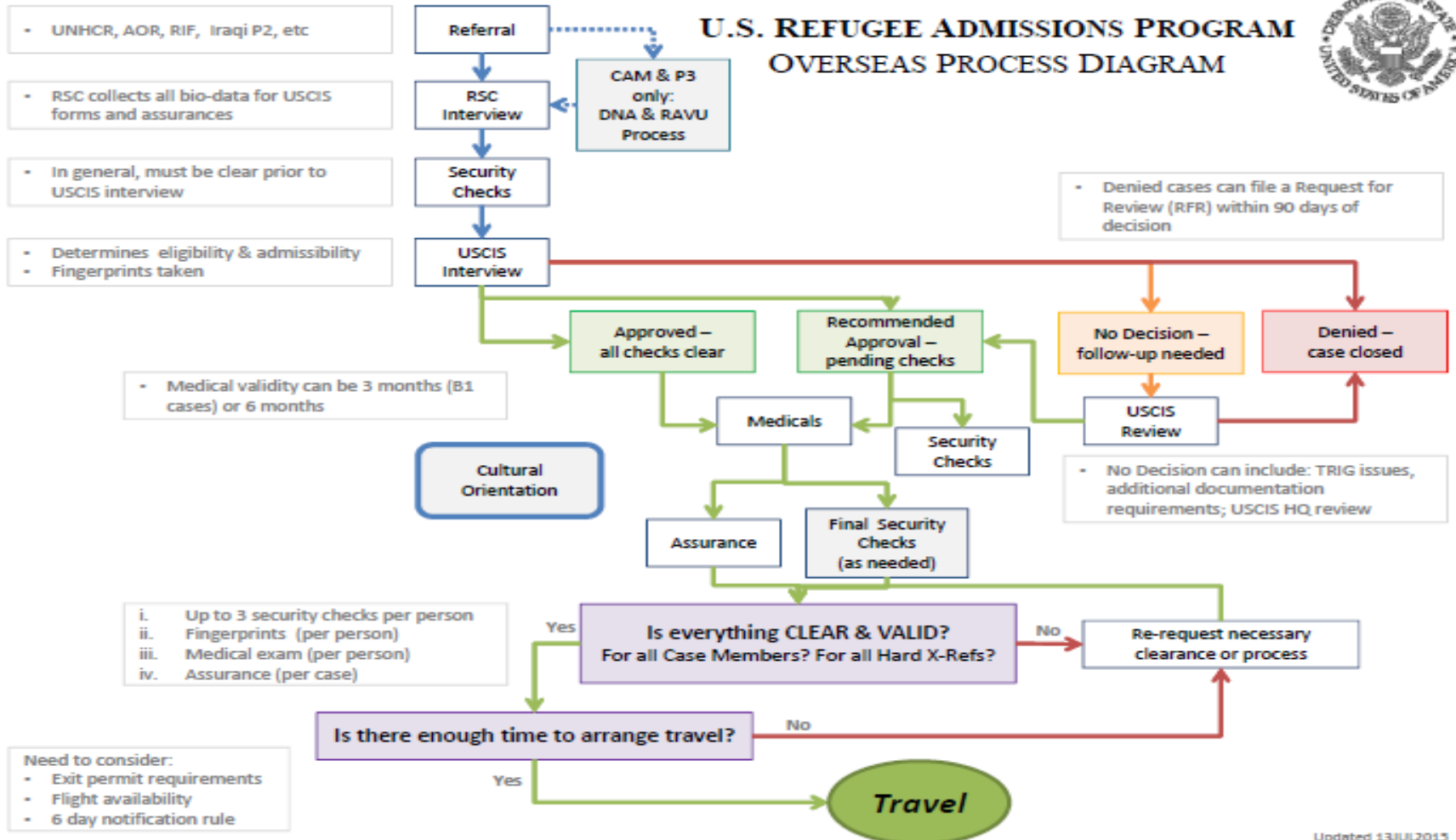
RESETTLEMENT SUPPORT CENTERS



- Nine RSCs operated by NGO, IOM, or State Department (Havana)
- Work under cooperative agreements with PRM with a single country focus (Cuba; Austria) or a regional basis.
- Interview applicants; take persecution claim, family information.
- Initiate security checks.
- Schedule and support DHS/USCIS adjudication teams.
- Provide pre-departure cultural orientation.
- Work with IOM to finalize travel once all clearances obtained.



U.S. Department of State Bureau of Population, Refugees, and Migration





U.S. Department of State Bureau of Population, Refugees, and Migration

Reception and Placement (R&P) Program a public-private partnership

- Program administered by PRM to help refugees with initial resettlement in the U.S.
- Nine national resettlement agencies place refugees throughout the U.S.
- PRM provides a *portion* of the funding necessary to fulfill the R&P requirements. (\$2,075 per capita in FY2017)



Role of Resettlement Agency

- **Sponsor** and arrange for reception and placement of refugees
- **Provide** refugees with basic necessities and core services during initial resettlement (30-90 days)
- **Assist** refugees in achieving self-sufficiency through employment as soon as possible in coordination with refugee service and assistance programs
- **Coordinate** with other community partners



Determining Resettlement Capacity

- Each year, national resettlement agencies work in partnership with their local affiliates to **assess** the number of refugees that can be resettled to a particular city in the upcoming year.
- The affiliates **engage in consultations** with many relevant state and community partners to arrive at the proposed capacity.
- Resettlement agencies **present** proposed placement plans to PRM for review and approval.



U.S. Department of State Bureau of Population, Refugees, and Migration

Top Ten Resettlement States

California

Texas

New York

Michigan

Ohio

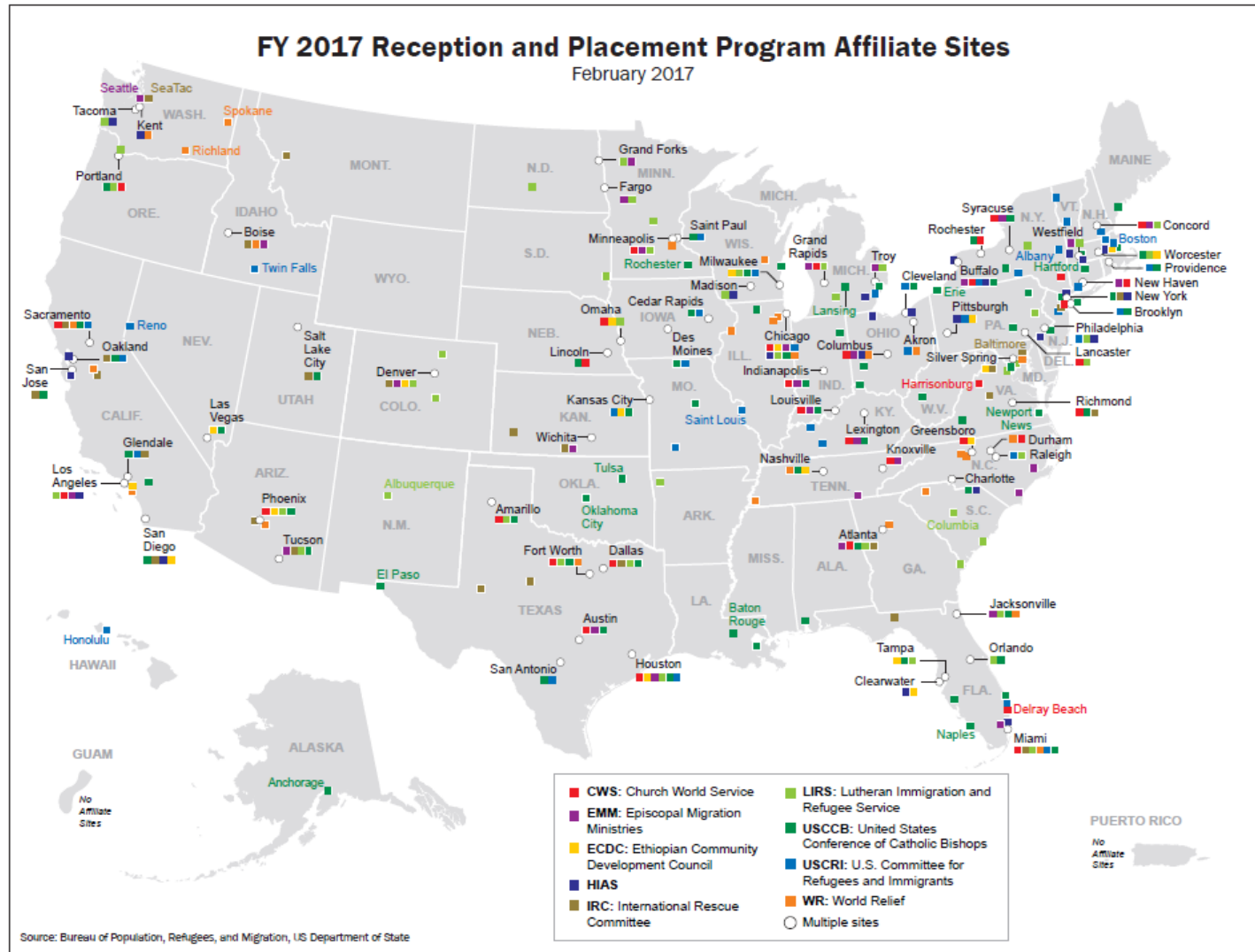
Arizona

North Carolina

Washington

Pennsylvania

Illinois





Basic Necessities and Core Services

- **Basic necessities:** housing, furnishings, necessary seasonal clothing, food, pocket money
- **Assistance** applying for cash and medical benefits, social security cards; enrollment in English language programs and employment services; health screenings and appropriate health services; school enrollment for children
- **Cultural orientation**



U.S. Department of State Bureau of Population, Refugees, and Migration

Economic Self-Sufficiency

Economic self-sufficiency means earning a total family income at a level that enables a family unit to support itself without receipt of a federal or state cash assistance grant.



U.S. Department of State

www.state.gov/j/prm

Cultural Orientation Resource Exchange

www.coresourceexchange.org

Office of Refugee Resettlement

<http://www.acf.dhhs.gov/programs/orr>